

NUTORK[®]

Actuators & Valves



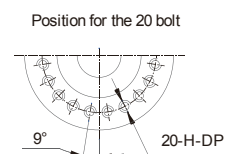
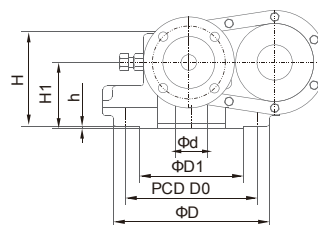
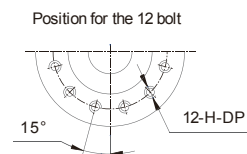
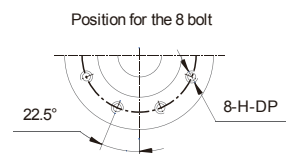
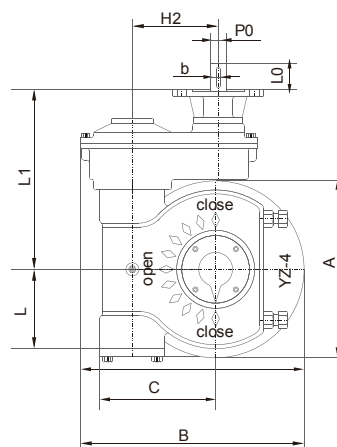
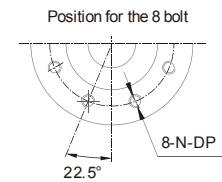
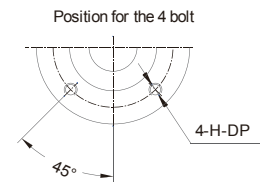
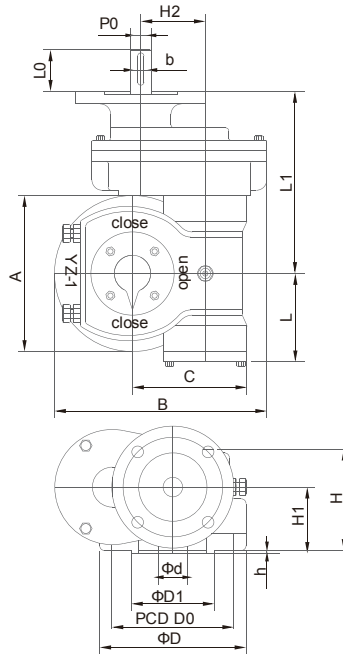
YZ-SD Series
Quarter Turn Gearboxes
MY-V-SD Series
Multi-Turn Gearboxes



NUTORK CORP.

NUTORK® | YZ-SD Series Quarter Turn Gearboxes

It is quarter turn gearboxes, suit to be used on ball valves, butterfly valves, plug valves etc. The housing made by precise casting, and the gear boxes have fresh pattern and nice appearance. It transmitted by worm gear and worm, and the worm gear with self-locking, also by using tapered roller bearing, the gear box can be operated more flexibly and have higher efficiency. Stem nut can be uni-body or separated just according to customers' requirement. The mounting flange adapts to ISO.5211. The Protection grade can be IP65, for some special environment, it also can be IP68.



Model	YZ0-SD	YZ1-SD	YZ2-SD	YZ2J-SD	YZ3-SD	YZ3J-SD	YZ4-SD	YZ4J-SD	YZ5-SD	YZ5J-SD	YZ6-SD	YZ6J-SD	YZ7-SD	YZ7X-SD	YZ7J-SD	YZ8-SD	YZ8J-SD	YZ9-SD	YZ10-SD	YZ11-SD	YZ12-SD
-------	--------	--------	--------	---------	--------	---------	--------	---------	--------	---------	--------	---------	--------	---------	---------	--------	---------	--------	---------	---------	---------

CONNECTION-SIZE

Flange	F10	F12	F14	F16	F16	F20	F25	F30	F30	F35	F35	F40	F40	F48	F48	F48	F60	F60	F80	F100	F100	
OD (D)	125	150	175	210	210	250	300	350	350	415	415	475	475	560	560	560	686	686	900	1200	1200	
PCD	D0	102	125	140	165	165	205	254	298	298	356	356	406	406	483	483	483	603	603	813	1042	1042
	N-H-DP	4-M10-15	4-M12-18	4-M16-24	4-M20-30	4-M20-30	8-M16-24	8-M16-24	8-M20-30	8-M20-30	8-M30-45	8-M30-45	8-M36-54	8-M36-54	12-M36-54	12-M36-54	12-M36-54	20-M36-54	20-M36-54	20-M42-65	22-M42-65	22-M42-65
Convex (D1×h)	70×3	85×3	100×4	130×5	130×5	140×5	200×5	230×5	230×5	260×5	260×5	300×8	300×8	370×8	370×8	370×8	470×8	470×8	670×10	870×10	870×10	
Max-Stem mm (Φd)	30 8×7	42 12×8	50 14×9	60 18×11	60 18×11	75 22×14	90 25×14	110 28×16	110 28×16	120 32×18	120 32×18	145 40×22	160 40×22	170 45×25	180 45×25	200 45×25	210 50×28	220 50×28	300 70×36	380 80×40	420 90×45	

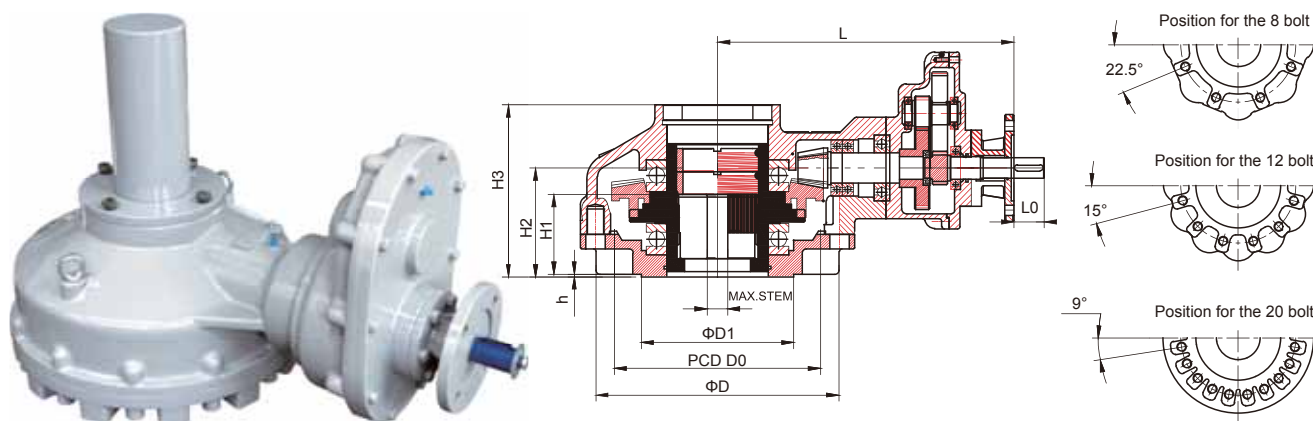
OUTLINE DIMENSION

A	125	150	175	210	225	300	340	350	390	430	470	560	590	620	660	730	770	800	1150	1550	1830
B	156	204	226	245	300	390	430	418	468	488	595	637	765	705	820	895	910	995	1405	1730	2085
C	90	110	120	140	154	186	222	243	232	275	298	357	375	395	405	452	525	535	710	955	1170
L	80	85	95	115	122	148	167	185	187	225	232	280	295	315	340	365	395	420	475	770	820
L1	167	175	185	275	280	350	346	407	410	480	482	530	570	595	660	645	675	710	852	1275	1190
H	100	105	114	132	154	155	185	185	190	195	200	243	244	270	292	305	380	400	415	555	655
H1	70	68	78	93	106	105	127	122	120	132	127	145	153	167	193	208	215	250	263	355	410

Model	Gear Ratio	Output torque Nm	Input torque Nm	Output Flange		Input Flange		
				ISO5211	ISO5211	ISO5210	Inputshaft	Input flange
YZ-0-SD	51:1	500Nm	41Nm	F10	F07	F10	Φ20x6x40	Z10
	60:1		35Nm	F10	F07	F10	Φ20x6x40	Z10
YZ-1-SD	66:1	1200Nm	80Nm	F12	F10	F10	Φ20x6x40	Z10
	80:1		68Nm	F12	F10	F10	Φ20x6x40	Z10
	92:1		60Nm	F12	F10	F10	Φ20x6x40	Z10
YZ-2-SD	66:1	1600Nm	108Nm	F14	F12	F10	Φ20x6x40	Z10
	80:1		100Nm	F14	F12	F10	Φ20x6x40	Z10
	92:1		80Nm	F14	F12	F10	Φ20x6x40	Z10
YZ-2J-SD	70:1	3000Nm	176Nm	F16	F14	F14	Φ30x8x50	Z20
	110:1		108Nm	F16	F14	F10	Φ20x6x40	Z10
	127:1		100Nm	F16	F14	F10	Φ20x6x40	Z10
	155:1		80Nm	F16	F14	F10	Φ20x6x40	Z10
	220:1		60Nm	F16	F14	F10	Φ20x6x40	Z10
	318:1		41Nm	F16	F14	F10	Φ20x6x40	Z10
	450:1		34Nm	F16	F14	F10	Φ20x6x40	Z10
YZ-3-SD	110:1	4500Nm	176Nm	F16	F14	F14	Φ30x8x50	Z20
	140:1		142Nm	F16	F14	F14	Φ30x8x50	Z20
	230:1		80Nm	F16	F14	F10	Φ20x6x40	Z10
	310:1		60Nm	F16	F14	F10	Φ20x6x40	Z10
	375:1		50Nm	F16	F14	F10	Φ20x6x40	Z10
YZ-3J-SD	125:1	7500Nm	230Nm	F20	F16/F25	F14	Φ30x8x50	Z30
	220:1		142Nm	F20	F16/F25	F14	Φ30x8x50	Z20
	265:1		120Nm	F20	F16/F25	F10	Φ20x6x40	Z20
	290:1		108Nm	F20	F16/F25	F10	Φ20x6x40	Z20
	390:1		80Nm	F20	F16/F25	F10	Φ20x6x40	Z10
	450:1		60Nm	F20	F16/F25	F10	Φ20x6x40	Z10
YZ-4-SD	165:1	12000Nm	300Nm	F25	F16/F30	F16	Φ40x12x60	Z45
	200:1		250Nm	F25	F16/F30	F14	Φ30x8x50	Z30
	245:1		203Nm	F25	F16/F30	F14	Φ30x8x50	Z30
	420:1		120Nm	F25	F16/F30	F16	Φ40x12x60	Z60
	460:1		108Nm	F25	F16/F30	F14	Φ30x8x50	Z30
YZ-4J-SD	170:1	16500Nm	400Nm	F30	F25/F35	F16	Φ40x12x60	Z45
	190:1		366Nm	F30	F25/F35	F14	Φ30x8x50	Z30
	230:1		300Nm	F30	F25/F35	F14	Φ30x8x50	Z30
	275:1		250Nm	F30	F25/F35	F14	Φ30x8x50	Z30
	300:1		230Nm	F30	F25/F35	F14	Φ30x8x50	Z30
	350:1		203Nm	F30	F25/F35	F14	Φ30x8x50	Z30
	570:1		120Nm	F30	F25/F35	F10	Φ20x6x40	Z20
YZ-5-SD	220:1	23000Nm	474Nm	F30	F25/F35	F16	Φ40x12x60	Z45
	320:1		300Nm	F30	F25/F35	F14	Φ30x8x50	Z30
	385:1		250Nm	F30	F25/F35	F14	Φ30x8x50	Z30
	420:1		230Nm	F30	F25/F35	F14	Φ30x8x50	Z30
	475:1		203Nm	F30	F25/F35	F14	Φ30x8x50	Z20
	868:1		120Nm	F30	F25/F35	F14	Φ30x8x50	Z20
YZ-5J-SD	235:1	28000Nm	474Nm	F35	F30/F40	F16	Φ40x12x60	Z45
	320:1		366Nm	F35	F30/F40	F14	Φ30x8x50	Z30
	390:1		300Nm	F35	F30/F40	F14	Φ30x8x50	Z30
	465:1		250Nm	F35	F30/F40	F14	Φ30x8x50	Z30
	580:1		203Nm	F35	F30/F40	F14	Φ30x8x50	Z20
	938:1		120Nm	F35	F30/F40	F10	Φ20x6x40	Z20
YZ-6-SD	245:1	32000Nm	542Nm	F35	F30/F40	F16	Φ40x12x60	Z60
	260:1		500Nm	F35	F30/F40	F16	Φ40x12x60	Z60
	302:1		450Nm	F35	F30/F40	F16	Φ40x12x60	Z45
	445:1		300Nm	F35	F30/F40	F14	Φ30x8x50	Z30
	540:1		250Nm	F35	F30/F40	F14	Φ30x8x50	Z30
	660:1		203Nm	F35	F30/F40	F14	Φ30x8x50	Z20
	765:1		176Nm	F35	F30/F40	F14	Φ30x8x50	Z20
YZ-6J-SD	300:1	48000Nm	680Nm	F40	F30/F35	F16	Φ40x12x60	Z60
	400:1		500Nm	F40	F30/F35	F16	Φ40x12x60	Z60
	450:1		450Nm	F40	F30/F35	F14	Φ30x8x50	Z45
	540:1		366Nm	F40	F30/F35	F14	Φ30x8x50	Z45
	670:1		300Nm	F40	F30/F35	F14	Φ30x8x50	Z30
	800:1		250Nm	F40	F30/F35	F14	Φ30x8x50	Z30
	1040:1		203Nm	F40	F30/F35	F14	Φ30x8x50	Z30

Model	Gear Ratio	Output torque Nm	Input torque Nm	Output Flange		Input Flange		
				ISO5211	ISO5211	ISO5210	Inputshaft	Input flange
YZ-7-SD	300:1	63000Nm	900Nm	F40	F30/F35	F16	Φ40x12x60	Z90
	445:1		600Nm	F40	F30/F35	F16	Φ40x12x60	Z60
	530:1		500Nm	F40	F30/F35	F14	Φ30x8x50	Z60
	580:1		450Nm	F40	F30/F35	F14	Φ30x8x50	Z45
	875:1		300Nm	F40	F30/F35	F14	Φ30x8x50	Z30
	1050:1		250Nm	F40	F30/F35	F14	Φ30x8x50	Z30
YZ-7X-SD	355:1	80000Nm	900Nm	F48	F35/F40	F16	Φ40x12x60	Z90
	450:1		745Nm	F48	F35/F40	F16	Φ40x12x60	Z90
	555:1		600Nm	F48	F35/F40	F16	Φ40x12x60	Z60
	670:1		500Nm	F48	F35/F40	F14	Φ30x8x50	Z60
	750:1		450Nm	F48	F35/F40	F14	Φ30x8x50	Z45
	1120:1		300Nm	F48	F35/F40	F14	Φ30x8x50	Z30
YZ-7J-SD	350:1	100000Nm	1200Nm	F48	F35/F40	F25	Φ50x14x80	Z120
	410:1		1020Nm	F48	F35/F40	F25	Φ50x14x80	Z120
	470:1		900Nm	F48	F35/F40	F16	Φ40x12x60	Z90
	695:1		600Nm	F48	F35/F40	F16	Φ40x12x60	Z60
	840:1		500Nm	F48	F35/F40	F14	Φ30x8x50	Z60
	930:1		450Nm	F48	F35/F40	F14	Φ30x8x50	Z45
YZ-8-SD	330:1	140000Nm	1800Nm	F48	F40/F60	F30	Φ60x18x90	Z180
	435:1		1355Nm	F48	F40/F60	F25	Φ50x14x80	Z180
	490:1		1200Nm	F48	F40/F60	F25	Φ50x14x80	Z120
	705:1		845Nm	F48	F40/F60	F16	Φ40x12x60	Z90
	865:1		680Nm	F48	F40/F60	F16	Φ40x12x60	Z90
	980:1		600Nm	F48	F40/F60	F16	Φ40x12x60	Z60
YZ-8J-SD	1095:1	190000Nm	542Nm	F48	F40/F60	F16	Φ40x12x60	Z60
	585:1		1355Nm	F60	F40/F48	F25	Φ50x14x80	Z120
	665:1		1200Nm	F60	F40/F48	F25	Φ50x14x80	Z120
	780:1		1020Nm	F60	F40/F48	F25	Φ50x14x80	Z120
	880:1		900Nm	F60	F40/F48	F16	Φ40x12x60	Z90
	1060:1		745Nm	F60	F40/F48	F16	Φ40x12x60	Z90
YZ-9-SD	1160:1	250000Nm	680Nm	F60	F40/F48	F16	Φ40x12x60	Z90
	1320:1		600Nm	F60	F40/F48	F16	Φ40x12x60	Z60
	1650:1		500Nm	F60	F40/F48	F14	Φ30x8x50	Z60
	1835:1		450Nm	F60	F40/F48	F14	Φ30x8x50	Z45
	2065:1		400Nm	F60	F40/F48	F14	Φ30x8x50	Z45
	410:1		2500Nm	F60	F40/F48	F30	Φ60x18x90	Z250
YZ-9J-SD	580:1	400000Nm	1800Nm	F60	F40/F48	F30	Φ60x18x90	Z180
	620:1		1700Nm	F60	F40/F48	F30	Φ60x18x90	Z180
	770:1		1355Nm	F60	F40/F48	F25	Φ50x14x80	Z180
	875:1		1200Nm	F60	F40/F48	F25	Φ50x14x80	Z120
	1020:1		1020Nm	F60	F40/F48	F25	Φ50x14x80	Z120
	1160:1		900Nm	F60	F40/F48	F16	Φ40x12x60	Z90
YZ-10-SD	1305:1	650000Nm	800Nm	F60	F40/F48	F25	Φ50x14x80	Z90
	2095:1		500Nm	F60	F40/F48	F14	Φ30x8x50	Z60
	2610:1		400Nm	F60	F40/F48	F14	Φ30x8x50	Z45
	570:1		3500Nm	F80	F48/F60	F30	Φ60x18x90	Z350
	665:1		3000Nm	F80	F48/F60	F30	Φ60x18x90	Z350
	800:1		2500Nm	F80	F48/F60	F30	Φ60x18x90	Z250
YZ-10J-SD	985:1	850000Nm	2030Nm	F80	F48/F60	F30	Φ60x18x90	Z250
	1110:1		1800Nm	F80	F48/F60	F30	Φ60x18x90	Z180
	1176:1		1700Nm	F80	F48/F60	F30	Φ60x18x90	Z180
	1476:1		1355Nm	F80	F48/F60	F25	Φ50x14x80	Z180
	1666:1		1200Nm	F80	F48/F60	F25	Φ50x14x80	Z120
	1960:1		1020Nm	F80	F48/F60	F25	Φ50x14x80	Z120
YZ-11-SD	2500:1	1000000Nm	800Nm	F80	F48/F60	F25	Φ50x14x80	Z90
	4000:1		500Nm	F80	F48/F60	F14	Φ30x8x50	Z60
	5000:1		400Nm	F80	F48/F60	F14	Φ30x8x50	Z45
	775:1		3500Nm	F100	F80	F30	Φ60x18x90	Z350
	900:1		3000Nm	F100	F80	F30	Φ60x18x90	Z350
	1010:1		2500Nm	F100	F80	F30	Φ60x18x90	Z250
YZ-11J-SD	1335:1	1200000Nm	2030Nm	F100	F80	F30	Φ60x18x90	Z250
	1504:1		1800Nm	F100	F80	F30	Φ60x18x90	Z180
	1595:1		1700Nm	F100	F80	F30	Φ60x18x90	Z180
	1998:1		1355Nm	F100	F80	F25	Φ50x14x80	Z180
	2260:1		1200Nm	F100	F80	F25	Φ50x14x80	Z120
	2655:1		1020Nm	F100	F80	F25	Φ50x14x80	Z120
YZ-12-SD	3385:1	1500000Nm	800Nm	F100	F80	F25	Φ50x14x80	Z90
	5420:1		500Nm	F100	F80	F14	Φ30x8x50	Z60
	6790:1		400Nm	F100	F80	F14	Φ30x8x50	Z45
	1010:1		3500Nm	F100	F80	F30	Φ60x18x90	Z350
	1180:1		3000Nm	F100	F80	F30	Φ60x18x90	Z350
	1420:1		2500Nm	F100	F80	F30	Φ60x18x90	Z250
YZ-12J-SD	1750:1	2000000Nm	2030Nm	F100	F80	F30	Φ60x18x90	Z250
	1970:1		1800Nm	F100	F80	F30	Φ60x18x90	Z180
	2085:1		1700Nm	F100	F80	F30	Φ60x18x90	Z180
	2620:1		1355Nm	F100	F80	F25	Φ50x14x80	Z180
	2955:1		1200Nm	F100	F80	F25	Φ50x14x80	Z120
	3480:1		1020Nm	F100	F80	F25	Φ50x14x80	Z120
YZ-12J-SD	4435:1	2500000Nm	800Nm	F100	F80	F25	Φ50x14x80	Z90
	7090:1		500Nm	F100	F80	F14	Φ30x8x50	Z60
	8860:1		400Nm	F100	F80	F14	Φ30x8x50	Z45

The gearboxes can be installed directly on the gate valve, globe valve and so on. By using Spiral bevel gears and thrust ball bearing, the gearboxes can run smoothly, and have high output torque, low noise and high efficiency. It can avoid from waterproof & oil leakage as sealing glands are used at all the through part. And the Protection grade can be IP65. The handwheel and the stem covers can be customized. For different valves and requirement. there are single stage gear box with actuator flange, double stage gearbox with acuator flange and double stage gearbox with handwheel etc.

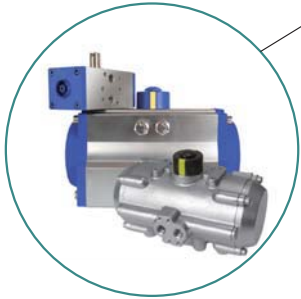


Model	MY-V0-SD	MY-V1-SD	MY-V2-SD	MY-V3-SD	MY-V35-SD	MY-V4-SD	MY-V5-SD	MY-V6-SD	MY-V7-SD	MY-V8-SD	MY-V9-SD	MY-V10-SD	
TECHNICAL-PARAMETERS													
Max-stem dia.Mm	35	40	52	60	70	90	110	120	130	150	180	200	
Weight(Kg)	35	41	52	70	115	195	256	316	470	645	1350	1700	
CONNECTION-SIZE													
FLANGE	F14	F16	(F20)	F25	F30	F35	F35	F40	F48	F60	F60	F80	
OD (D)	175	210	250	300	350	415	415	475	560	686	686	900	
PCD	D0	140	165	205	254	298	356	356	406	483	603	603	813
N-H-DP	4-M16-24	4-M20-30	8-M16-24	8-M16-24	8-M20-35	8-M30-45	8-M30-45	8-M36-54	12-M36-54	20-M36-54	20-M36-54	20-M42-65	
Convex(D1×h)	100×4	130×4	140×5	200×5	230×5	260×5	260×5	300×8	370×8	470×8	470×8	670×10	
OUTLINE DIMENSION													
H1	55	62	89	97	120	120	152	176	188	230	200	200	
H2	69	78	91	99.5	112	164	215	290	227	231	330	330	
H3	114	125	144	163	188	269	235	338.5	331	346	409	540.5	
L	160	180	305	330	390	400	480	500	550	610	817	964	

Model	Gear Ratio	Output torque Nm	Input torque Nm	Output Flange		Input Flange		
				ISO5211	ISO5211/ JB2920-81	ISO5210	Input shaft	Input flange
MYV0-SD	5:1	450Nm	102Nm	F14	F12/Z30	F10	Φ20×6×40	Z10
	6:1		90Nm	F14	F12/Z30	F10	Φ20×6×40	Z10
	8:1		80Nm	F14	F12/Z30	F10	Φ20×6×40	Z10
	9.7:1		68Nm	F14	F12/Z30	F10	Φ20×6×40	Z10
MYV1-SD	5:1	600Nm	150Nm	F16	F4/Z45	F10	Φ20×6×40	Z15
	8:1		108Nm	F16	F4/Z45	F10	Φ20×6×40	Z10
	10:1		80Nm	F16	F4/Z45	F10	Φ20×6×40	Z10
	11.6:1		68Nm	F16	F4/Z45	F10	Φ20×6×40	Z10
MYV2-SD	6:1	900Nm	200Nm	F20	F14/Z60	F14	Φ30×8×50	Z20
	8:1		150Nm	F20	F14/Z60	F14	Φ30×8×50	Z15
	10:1		125Nm	F20	F14/Z60	F10	Φ20×6×40	Z15
	13.2:1		100Nm	F20	F14/Z60	F10	Φ20×6×40	Z10
MYV3-SD	6:1	1600Nm	350Nm	F25	F16/Z120	F14	Φ30×8×50	Z45
	8:1		244Nm	F25	F16/Z120	F14	Φ30×8×50	Z30
	10:1		230Nm	F25	F16/Z120	F14	Φ30×8×50	Z30
	17.6:1		125Nm	F25	F16/Z120	F10	Φ20×6×40	Z15
MYV35-SD	6:1	4000Nm	845Nm	F30	F25/Z250	F25	Φ50×14×80	Z90
	8:1		600Nm	F30	F25/Z250	F16	Φ40×12×60	Z60
	10:1		542Nm	F30	F25/Z250	F16	Φ40×12×60	Z60
	15:1		366Nm	F30	F25/Z250	F14	Φ30×8×50	Z45
	18:1		300Nm	F30	F25/Z250	F14	Φ30×8×50	Z30
	20:1		270Nm	F30	F25/Z250	F14	Φ30×8×50	Z30
	23:1		250Nm	F30	F25/Z250	F14	Φ30×8×50	Z30
MYV4-SD	10:1	6000Nm	800Nm	F30	F25/Z350	F25	Φ50×14×80	Z90
	15:1		542Nm	F30	F25/Z350	F16	Φ40×12×60	Z60
	20:1		400Nm	F35	F25/Z350	F16	Φ40×12×60	Z45
	25:1		366Nm	F35	F25/Z350	F16	Φ40×12×60	Z45
	30:1		270Nm	F35	F25/Z350	F16	Φ40×12×60	Z30
	35:1		244Nm	F35	F25/Z350	F14	Φ30×8×50	Z30
	40.5:1		230Nm	F35	F25/Z350	F14	Φ30×8×50	Z30
MYV5-SD	10:1	8000Nm	1000Nm	F35	F30/Z800	F25	Φ50×14×80	Z120
	15:1		750Nm	F35	F30/Z800	F25	Φ50×14×80	Z90
	20:1		542Nm	F35	F30/Z800	F16	Φ40×12×60	Z60
	25:1		474Nm	F35	F30/Z800	F16	Φ40×12×60	Z60
	30:1		400Nm	F35	F30/Z800	F16	Φ40×12×60	Z45
	35:1		366Nm	F35	F30/Z800	F16	Φ40×12×60	Z45
	42.5:1		250Nm	F35	F30/Z800	F14	Φ30×8×50	Z30

Model	Gear Ratio	Output torque Nm	Input torque Nm	Output Flange		Input Flange		
				ISO5211	ISO5211/ JB2920-81	ISO5210	Input shaft	Input flange
MY-V6-SD	10:1	10000Nm	1355Nm	F40	F35/Z100	F25	Φ50×14×80	Z120
	15:1		845Nm	F40	F35/Z100	F25	Φ50×14×80	Z90
	20:1		645Nm	F40	F35/Z100	F25	Φ50×14×80	Z60
	25:1		542Nm	F40	F35/Z100	F16	Φ40×12×60	Z60
	30:1		474Nm	F40	F35/Z100	F16	Φ40×12×60	Z60
	35:1		400Nm	F40	F35/Z100	F16	Φ40×12×60	Z45
	46:1		310Nm	F40	F35/Z100	F14	Φ30×8×50	Z30
MY-V7-SD	15:1	18500Nm	1700Nm	F48	F40	F30	Φ60×18×90	Z180
	20:1		1355Nm	F48	F40	F25	Φ50×14×80	Z120
	25:1		1020Nm	F48	F40	F25	Φ50×14×80	Z120
	30:1		845Nm	F48	F40	F25	Φ50×14×80	Z90
	40:1		680Nm	F48	F40	F16	Φ40×12×60	Z90
	50:1		542Nm	F48	F40	F16	Φ40×12×60	Z60
	60:1		474Nm	F48	F40	F16	Φ40×12×60	Z45
	70:1		400Nm	F48	F40	F16	Φ40×12×60	Z45
	80:1		366Nm	F48	F40	F16	Φ40×12×60	Z45
94:1	300Nm	F48	F40	F14	Φ30×8×50	Z30		
MY-V8-SD	15:1	26000Nm	2500Nm	F60	F40/F48	F30	Φ60×18×90	Z250
	20:1		1700Nm	F60	F40/F48	F30	Φ60×18×90	Z180
	25:1		1355Nm	F60	F40/F48	F25	Φ50×14×80	Z120
	30:1		1290Nm	F60	F40/F48	F25	Φ50×14×80	Z120
	40:1		1020Nm	F60	F40/F48	F25	Φ50×14×80	Z120
	50:1		800Nm	F60	F40/F48	F25	Φ50×14×80	Z90
	60:1		645Nm	F60	F40/F48	F16	Φ40×12×60	Z60
	70:1		542Nm	F60	F40/F48	F16	Φ40×12×60	Z60
	80:1		500Nm	F60	F40/F48	F25	Φ50×14×80	Z60
	112:1		400Nm	F60	F40/F48	F16	Φ40×12×60	Z45
MY-V9-SD	20:1	65000Nm	4300Nm	F60	F48	F35	Φ60×18×90	Z500
	30:1		3000Nm	F60	F48	F30	Φ60×18×90	Z350
	40:1		2300Nm	F60	F48	F30	Φ60×18×90	Z250
	50:1		1700Nm	F60	F48	F30	Φ60×18×90	Z180
	60:1		1700Nm	F60	F48	F30	Φ60×18×90	Z180
	75:1		1355Nm	F60	F48	F25	Φ50×14×80	Z120
	95:1		1020Nm	F60	F48	F25	Φ50×14×80	Z120
	105:1		1020Nm	F60	F48	F25	Φ50×14×80	Z120
	130:1		800Nm	F60	F48	F25	Φ50×14×80	Z90
	185:1		600Nm	F60	F48	F16	Φ40×12×60	Z60
MY-V10-SD	20:1	100000Nm	6500Nm	F80	F60	F40	Φ70×20×100	Z650
	30:1		5000Nm	F80	F60	F35	Φ60×18×90	Z500
	45:1		3500Nm	F80	F60	F35	Φ60×18×90	Z350
	60:1		2500Nm	F80	F60	F30	Φ60×18×90	Z250
	100:1		1700Nm	F80	F60	F30	Φ60×18×90	Z180
	120:1		1355Nm	F80	F60	F25	Φ50×14×80	Z120
	145:1		1200Nm	F80	F60	F25	Φ50×14×80	Z120
	165:1		1000Nm	F80	F60	F25	Φ50×14×80	Z120
	210:1		800Nm	F80	F60	F25	Φ50×14×80	Z90
	335:1		500Nm	F80	F60	F16	Φ40×12×60	Z60

NUTORK CORP. manufactures a wide range of pneumatic actuators, electric actuators and the accessories of pneumatic actuator (limit switchbox, solenoid valve, manual override ---etc.) for quarter turn valves



Rack & Pinion Type Pneumatic Actuator.
(Certificated by CE-ATEX/SIL3)
Max. Output Torque: 9340Nm

Scotch Yoke Type Pneumatic & Hydraulic Actuator.
(Certificated by CE-ATEX/SIL3)
Max. Output Torque 293800Nm



NTQ Series Electric Actuator
IP67/IP68(30M@24hrs)Enclosure & EExdIIBT6
Max. Output Torque 6000Nm
Approved by SIL3/IP68/MD/LVD/EMC.

NTE Series Electric Actuator
IP67/IP68(30M@24hrs)
Enclosure
Max. Output Torque 6000Nm
Approved by SIL3/IP68/MD/LVD/EMC.



Limit Switchbox IP67/IP68(50M@72hrs)
Enclosure & EExdIIBT6/EEExdIICT6

Solenoid Valve 3/2NC & 5/2 Way, Static O-ring Sealing Design.
Aluminum & 316SS Body
IP67 & EExdIIBT6/EEExdIICT6



Air Filter Regulator Aluminum Body with Vinyl Paint & 316SS Body.
Size: 1/4" ~ 1"

Manual Override Aluminum & Cast Iron & Ductile Iron Body
Max Output Torque 70000Nm



Ball valve (Floating ball design),
We can provide different pressure rating/ connection type/ operation mode.

Concentric Soft Seated Butterfly Valve
High Performance Double Eccentric Butterfly Valve
High Performance Triple Offset Metal Seated Butterfly Valve
We can provide different pressure rating/ connection type/ operation mode.

